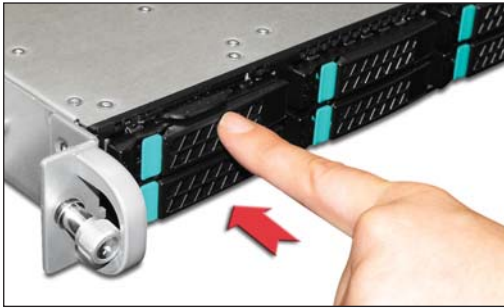

E-1800 R5 Single Hard Drive Replacement / Installation Instructions

BEFORE YOU BEGIN, READ THIS!



Step 7: Press firmly on the drive once the handle is locked to ensure that the drive is fully engaged.

Step 8: After replacing the failed disk, the green and amber LEDs of the new disk will start to blink which indicates that the mirror is rebuilding.

If one were to reboot and enter the RAID firmware they would see the current percentage of the rebuild. Once the rebuild has completed, the RAID will be marked as "Optimal" in the firmware utility and the amber led will be off. The front bezel can now be replaced.

The replacement of a single FAILED drive can be done while the application is still running. It does not require the appliance to be turned OFF or the operating system (OS) to be shutdown. These are hot-swappable hard disk drives that can be removed and re-installed while power is ON. The appliance will automatically detect the removal of a FAILED or defective drive and the installation of its replacement.

This is an appliance with RAID storage. Single hard drive failures do not result in an appliance failure. It will operate in the DEGRADED state until a replacement drive is installed and a REBUILD of that drive's data is complete. When the REBUILD is done, the appliance returns to the OPTIMAL state.

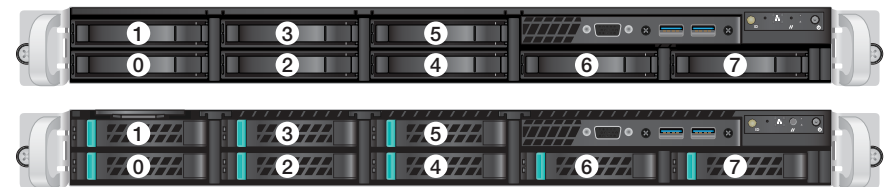
Hardware Configuration

It is possible that one or two disks, depending on the RAID type, could be marked as bad and the RAID marked as degraded, but this will not affect the appliance's ability to operate.



CAUTION

Removal of any other drives during this procedure or during the REBUILD will result in system failure.



Front View - RAID Disk Bays

NOTE: This is a generic replacement/installation guide. Your appliance may be different than what is shown in this document.



P/N: 590-1421-00



REV: 0A

Static-Sensitive Devices

Electrostatic discharge (ESD) can damage electronic components. To prevent damage to any printed circuit boards (PCBs), it is important to handle them very carefully. The following measures are generally sufficient to protect your equipment from ESD damage.

CAUTION

- Be sure that the appliance is properly grounded to the chassis ground through the AC power cord or enclosure frame.
- Touch a grounded metal object before removing drive from the antistatic bag.
- Handle drive by its edges only; do not touch components on the bottom.

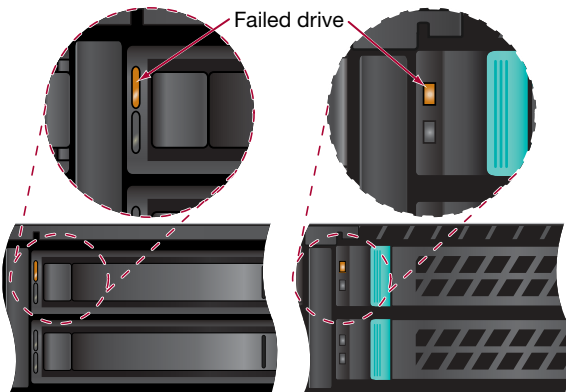
CAUTION

Removal of any drive that does not have a red light during this procedure, or during the REBUILD will result in system failure.

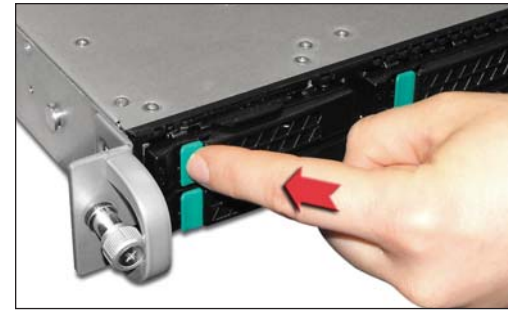
Single Disk Drive Failure Replacement Procedure

WARNING

Disk drives are static sensitive devices. Please make proper use of the wrist strap included in the disk FRU kit.



Step 1: First remove the front bezel if installed to expose the disk drives. When looking at the front of the appliance, the failed disk drive will have an illuminated amber LED on the disk sled. The failed LED is on the top.



Step 2: Press the green release button located beside the drive's LEDs on the failed drive to unlatch the handle.

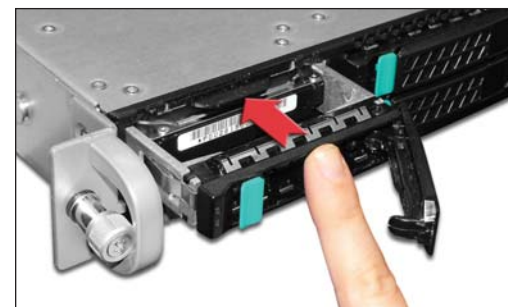


Step 3: Swing the handle fully out to disengage the drive.



Step 4: Slide the drive half way out of the drive bay and wait for it to spin down.

Allow 10-20 seconds before removing the drive from the drive bay.



Step 5: While the system is running Insert the replacement drive into the disk bay and slide the disk straight in until it stops.

Step 6: Swing the handle in toward the appliance. Continue pushing the handle in until you feel it lock in place.

(continued on the back side)